

1205 kW Load Bank

Loadtec Load Bank 1205

Model OL4-1205.1



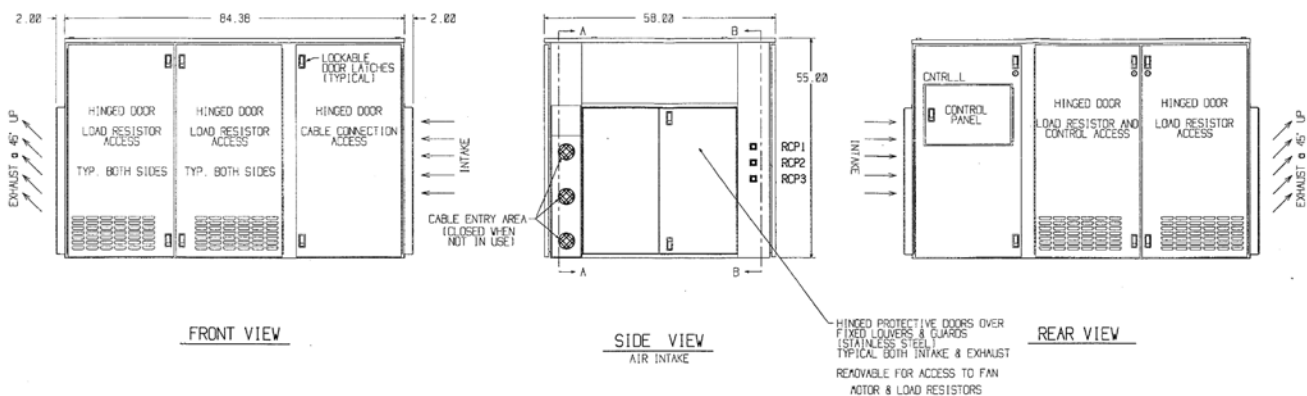
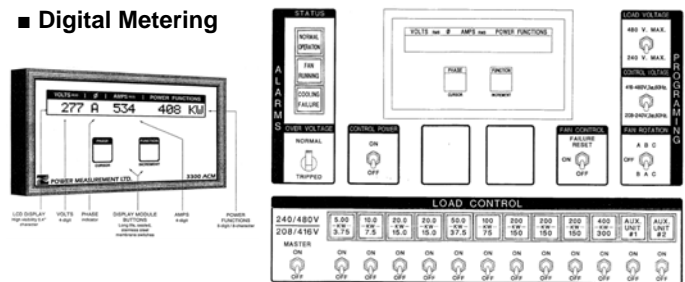
Specifications	
Rating	1205 kW Continuous
Controls Power	Internal or external
Instrumentation-Digital	Volts, Amps, Hertz, Kilowatts
Input Voltages:	
3 Phase	208 - 240 or 416 - 480 (3 ph)
1 Phase	120 or 240 (1 ph)
Weight:	
Load Bank & Trailer	8000 lbs. GVW

OL4-1205.1 Ratings & Load Steps	
Load Steps - 3 phase	
At 480 or 240 Volts AC	
Rating	1205 kW
Steps	5, 10, 20, 20, 50, 100, 200, 200, 200, 400 kW
At 208 or 416 Volts AC	
Rating	903.75 kW
Steps	3.75, 7.5, 15, 15, 37.5, 75, 150, 150, 150, 300 kW
Load Steps - 1 phase	
At 240 Volts AC	
Rating	602.5 kW
Steps	2.5, 5.0, 10, 10, 25, 50, 100, 100, 100, 200 kW

Standard Features

- **Load Capacity** - up to 1205 KW
- **Continuous Operation**
- **Enclosure** – Outdoor, Trailer Mounted, Nema 3R
- **Safety Features** – Protects against over voltage, over temperature, or no air flow. Fuse protection is provided for each individual load section and control circuit.

Digital Metering



LOS ANGELES 310 835-3161
Fax 310 518-3019

BAKERSFIELD 661 335-0300
Fax 661 335-0333

FONTANA 909 823-6505
Fax 909 823-6955